

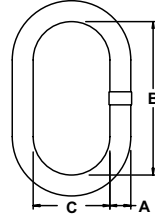
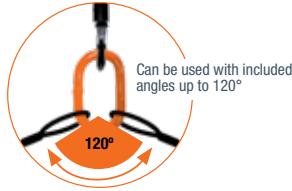


# MASTER LINK DUAL RATED FOR USE WITH HA800 OR HA1000

**WORKING LOAD LIMIT: 5,400 TO 105,900 LBS.**

**BENEFITS & FEATURES**

- Accepts both Herc-Alloy® 1000 & 800 chain and components
- Durable orange powder coated finish
- May be used for mechanical and welded sling assemblies
- 100% proof tested
- 4:1 design factor



Trade Size (in.)	Working Load Limit (lbs.)	Product Code	Nominal Dimensions (in.)			Weight (lbs.)	Type and Size of Chain Sling on Which Used (in.)			
			Material Diameter A	Inside Length B	Inside Width C		Single	Double	Triple	Quad
13/32	5,400	555231	0.41	3.00	1.50	0.33	7/32	7/32	–	–
1/2	8,600	555232	0.56	5.00	2.50	1.02	9/32	9/32	7/32*	7/32*
3/4	17,600	555235	0.75	5.50	2.75	2.08	3/8	3/8	9/32*	9/32*
1	30,000	555238	1.00	7.00	3.50	4.59	1/2 & 5/8	1/2	3/8*	3/8*
1-1/4	45,200	555240	1.25	8.75	4.38	9.31	3/4	5/8	1/2*	1/2*
1-1/2	70,600	555243	1.50	10.50	5.25	15.60	–	3/4	5/8*	5/8*
1-3/4	105,900	555246	1.75	12.00	6.00	24.40	–	–	3/4*	3/4*

\* Additional step down hardware required when using hammerlocks

HERC-ALLOY® 1000  
CHAIN SLING COMPONENTS

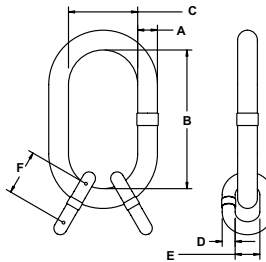
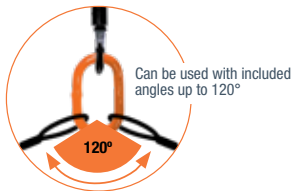
# SUB-ASSEMBLY DUAL RATED FOR USE WITH HA800 OR HA1000

**WORKING LOAD LIMIT: 7,000 TO 91,700 LBS.**



**BENEFITS & FEATURES**

- Designed for triple and quad branch Herc-Alloy® chain slings
- Consists of an oblong master link and two welded master coupling links
- Accepts both Herc-Alloy 1000 & 800 chain and components
- Durable orange powder coated finish
- May be used for mechanical or welded sling assemblies
- 100% proof tested
- 4:1 design factor



Trade Size (in.)	Working Load Limit at 60° (lbs.)	Product Code	Master Link Nominal Dimensions (in.)			Intermediate Link Nominal Dimensions (in.)			Weight (lbs.)	Type and Size of Chain Sling on Which Used (in.)	
			Material Diameter A	Inside Length B	Inside Width C	Material Diameter D	Inside Width E	Inside Length F		Triple	Quad
1/2	7,000	555274	0.56	5.00	2.50	0.44	1.06	1.75	1.35	7/32	7/32
3/4	11,200	555275	0.75	5.50	2.75	0.47	0.88	1.56	2.64	9/32	9/32
1	22,900	555276	1.00	7.00	3.50	0.78	1.50	2.63	7.25	3/8	3/8
1-1/4	39,000	555277	1.25	8.75	4.38	0.91	1.75	3.13	13.51	1/2	1/2
1-1/2	58,700	555278	1.50	10.50	5.25	1.13	2.25	4.00	24.28	5/8	5/8
1-3/4	91,700	555279	1.75	12.00	6.00	1.50	2.75	5.25	44.58	3/4	3/4

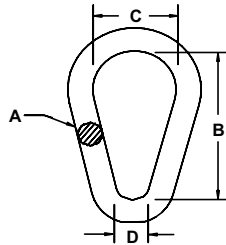


# PEAR SHAPED MASTER LINK HERC-ALLOY® 1000

WORKING LOAD LIMIT: 9,000 TO 125,200 LBS.

### BENEFITS & FEATURES

- Made from alloy material
- Proof tested at two times WLL
- Durable orange powder coated finish
- Custom sizes available upon request
- 4:1 design factor



Trade Size (in.)	Working Load Limit (lbs.)	Product Code	Nominal Dimensions (in.)				Weight (lbs.)	Type and Size of Chain Sling		
			Diameter A	Inside Length B	Inside Width C	Inside Width D		Single (in.)	Double (in.)	Triple (in.)
1/2	9,000	554702	0.56	5.31	2.50	1.25	1.05	7/32*, 9/32 & 3/8	7/32* & 9/32	7/32*
3/4	18,000	554706	0.75	5.63	2.75	2.00	2.08	1/2	3/8	9/32*
1	30,300	554710	1.00	7.26	3.50	2.63	4.59	5/8	1/2	3/8*
1-1/4	45,500	554714	1.25	8.75	4.63	3.25	9.24	3/4	5/8	1/2*
1-1/2	71,200	554719	1.50	10.50	5.25	3.88	15.89	-	3/4	5/8*
1-3/4	86,000	554723	1.75	12.00	6.00	4.50	24.00	-	-	-
2	120,000	554726	2.00	14.00	7.00	3.50	37.67	-	-	3/4*

\* Must step down one size when using hammerlocks

# EZ-CONNECT™ MASTER LINK & CHAIN SHORTENER DUAL RATED FOR USE WITH HA800 OR HA1000



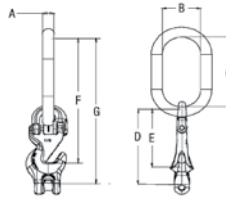
WORKING LOAD LIMIT: 9,000 TO 125,200 LBS.

### BENEFITS & FEATURES

- Fits Grade 80 and Grade 100 chain
- Durable orange powder coated finish
- Allows you to adjust sling legs quickly and easily, utilizing the same sling for various reaches
- Chain shortener features cradle hook to ensure full load seating for safe operation.
- Does not require the sling to be de-rated.
- Ability to use 30° to 60° angles, preventing dangerous side loading
- 4:1 design factor

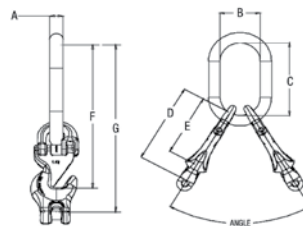
#### FOR SINGLE LEG SLING

Product Code	Chain Size (in.)	Working Load Limit @ 90°	Weight (lbs.)	Nominal Dimensions (in.)							
				Master Link			Shortener			Overall Reach	
				Material Dia. A	Width B	Pitch C	Pitch D	Pitch E	F	G	
555232S1	9/32	4,300	1.9	0.56	2.50	5.00	4.76	3.38	8.38	9.76	
555235S1	3/8	8,800	4.6	0.75	2.75	5.50	6.25	4.74	10.24	11.75	
555239S1	5/8	22,600	12.8	1.00	3.50	7.00	9.32	7.04	14.04	16.32	



#### FOR DOUBLE LEG SLING

Product Code	Chain Size (in.)	Working Load Limit			Weight (lbs.)	Nominal Dimensions (in.)						
		60°	45°	30°		Master Link			Shortener		Overall Reach	
		Material Dia. A	Width B	Pitch C		Pitch D	Pitch E	F	G			
555232S2	9/32	7,400	6,100	4,300	3.0	0.562	2.50	5.00	4.76	3.38	8.38	9.76
555235S2	3/8	15,200	12,400	8,800	7.1	0.75	2.75	5.50	6.25	4.74	10.24	11.75
555240S2	5/8	39,100	32,000	22,600	26.6	1.25	4.38	8.75	9.32	7.04	15.79	18.07



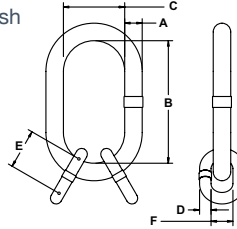
HERC-ALLOY® 1000  
 CHAIN SLING  
 COMPONENTS



# SUB-ASSEMBLY DUAL RATED FOR USE WITH HA800 & HA1000

**WORKING LOAD LIMIT: 7,000 TO 187,800 LBS.**
**BENEFITS & FEATURES**

- Designed for triple and quad branch Herc-Alloy® chain slings
- Consists of an oblong master link and two welded master coupling links
- Accepts both Herc-Alloy 800 & 1000 chain and components
- Durable orange powder coated finish
- May be used for mechanical or welded sling assemblies
- 100% proof tested
- 4:1 design factor



Can be used with included angles up to 120°

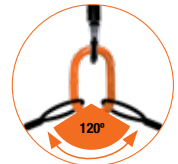
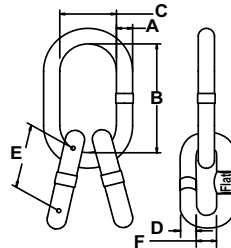
Trade Size (in.)	Working Load Limit at 60° (lbs.)	Product Code	Master Link Nominal Dimensions (in.)			Intermediate Link Nominal Dimensions (in.)			Weight (lbs.)	Type & Size of Chain Sling (in.)	
			Material Diameter A	Inside Length B	Inside Width C	Material Diameter D	Inside Length E	Inside Width F		Triple	Quad
1/2	7,000	555274	0.56	5.00	2.50	0.44	1.75	1.06	1.35	7/32	7/32
3/4	11,200	555275	0.75	5.50	2.75	0.47	1.56	0.88	2.64	9/32	9/32
1	22,900	555276	1.00	7.00	3.50	0.78	2.63	1.50	7.25	3/8	3/8
1-1/4	39,000	555277	1.25	8.75	4.38	0.91	3.13	1.75	13.51	1/2	1/2
1-1/2	58,700	555278	1.50	10.50	5.25	1.13	4.00	2.25	24.28	5/8	5/8
1-3/4	91,700	555279	1.75	12.00	6.00	1.50	5.25	2.75	44.58	3/4 & 7/8	3/4 & 7/8
2*	88,900	554980	2.00	14.00	7.00	1.53	5.25	2.75	57.34	7/8	7/8
2-1/4*	123,900	554981	2.25	16.00	8.00	1.78	6.00	3.00	81.48	1	1

\* Grade 80 only

# WIDE BODY SUB-ASSEMBLY WITH FLATS HERC-ALLOY 800®

**WORKING LOAD LIMIT: 4,600 TO 178,050 LBS.**
**BENEFITS & FEATURES**

- Designed to accept Herc-Alloy 800® chain, wire rope and synthetic attachments
- Durable orange powder coated finish
- 100% proof tested
- May be used for mechanical and welded sling assemblies
- Extra wide body is ideal for wire rope applications
- Sizes up to 1-1/4" intermediate links available with flats to accommodate Omega links
- 6:1 design factor



Can be used with included angles up to 120°

Trade Size (in.)	Working Load Limit (lbs.)		Complete Assembly Product Code	Master Link Nominal Dimensions (in.)			Intermediate Link Nominal Dimensions (in.)			Weight (lbs.)		
	With Chain	With Wire Rope & Synthetic		Product Code	Material Diameter A	Inside Length B	Inside Width C	Product Code	Material Diameter D		Inside Length E	Inside Width F
1/2	5,750	4,600	ML050SA	ML050	0.56	4.84	2.69	ML040	0.44	4.13	2.29	1.8
5/8	9,000	7,200	ML063SA	ML063	0.63	5.29	2.98	ML050	0.56	4.84	2.69	3.63
3/4	14,000	11,200	ML075SA	ML075	0.75	6.61	3.72	ML063	0.63	5.29	2.98	5.58
7/8	17,300	13,840	ML087SA	ML087	0.88	7.35	4.14	ML063	0.63	5.29	2.98	6.66
1	26,500	21,200	ML100SA	ML100	1.00	7.53	4.30	ML075	0.75	6.61	3.72	10.2
1-1/4	37,400	29,920	ML125SA	ML125	1.25	9.26	5.29	ML100	1.00	7.53	4.30	20.0
1-1/2	53,000	42,400	ML150SA	ML150	1.50	11.03	6.30	ML100	1.00	7.53	4.30	26.6
1-3/4	72,150	57,720	ML175SA	ML175	1.75	12.86	7.35	ML125	1.25	9.26	5.29	44.3
2	94,200	75,360	ML200SA	ML200	2.00	14.70	8.40	ML150	1.50	11.03	6.30	73.4
2-1/4	119,200	95,360	ML225SA	ML225	2.25	16.54	9.45	ML175	1.75	12.86	7.35	108.2

NOTE: Master link with flats are available through 1-1/4" only

\*\* Must step down one size when using hammerlocks

 HERC-ALLOY 800®  
 CHAIN SLING COMPONENTS

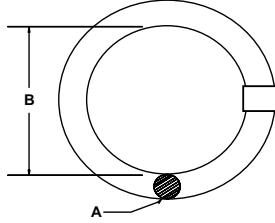


# MASTER RING HERC-ALLOY 800®

WORKING LOAD LIMIT: 3,500 TO 141,000 LBS.

## BENEFITS & FEATURES

- Made from alloy material
- Proof tested at two times WLL
- Durable orange powder-coated finish
- Design factor 4:1



Trade Size (in.)	Working Load Limit (lbs.)	Product Code	Dimensions (in.)		Weight (lbs.)	Type and Size of Chain Sling (in.)			
			Material Diameter A	Inside Length B		Single	Double	Triple	Quadruple
1/2	3,500	554611	0.51	2.50	0.52	7/32 & 9/32	–	–	–
5/8	6,100	554613	0.63	3.00	1.05	–	7/32	7/32	7/32
3/4	10,500	554615	0.75	4.00	1.86	3/8	9/32	9/32	9/32
7/8	12,300	554617	0.88	4.00	2.60	1/2	–	–	–
1	18,400	554619	1.00	4.00	3.45	5/8	3/8	–	–
1-1/4	28,300	554623	1.25	5.00	6.98	3/4	1/2	3/8	3/8
1-1/2	31,300	554627	1.50	6.00	11.80	–	–	–	–
2	73,500	554635	2.00	8.00	27.90	1-1/4	7/8	5/8	5/8
2	88,900	554636	2.2-1/225	9.00	39.90	–	–	3/4	3/4

HERC-ALLOY 800®

CHAIN SLING COMPONENTS

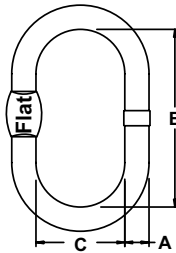


# MASTER LINK WITH & WITHOUT FLATS

WORKING LOAD LIMIT: 3,360 TO 142,440 LBS.

## BENEFITS & FEATURES

- Designed to accept HA800 chain, wire rope and synthetic attachments
- Use with mechanical and welded assemblies
- Sizes up to 1-1/4" available with flats to accommodate connecting links
- 100% proof tested
- 6:1 design factor
- Extra wide body makes these links ideal for wire rope applications and use with Omegaloks. Master link with flat allows for easy installation of these attachments



Can be used with included angles up to 120°

Trade Size (in.)	Working Load Limit with Wire Rope & Synthetics (lbs.)	Product Code	Nominal Dimensions (in.)			Flat Dimensions (in.)		Weight (lbs.)
			Material Diameter A	Inside Length B	Inside Width C	Width	Thickness	
7/16	3,360	ML040 ML040NF	0.44	4.13	2.29	0.94	0.28	0.50
1/2	4,600	ML050 ML050NF	0.56	4.84	2.69	0.94	0.28	1.02
5/8	7,200	ML063 ML063NF	0.63	5.29	2.98	1.22	2.81	1.53
3/4	11,360	ML075 ML075NF	0.75	6.61	3.72	1.41	0.40	2.36
7/8	13,840	ML087 ML087NF	0.88	7.35	4.14	1.56	0.44	3.60
1	21,200	ML100 ML100NF	1.00	7.53	4.30	1.56	0.53	5.20
1-1/4	29,920	ML125 ML125NF	1.25	9.26	5.29	1.56	0.68	9.60
1-1/2	42,400	ML150	1.50	11.03	6.30	-	-	16.20
1-3/4	57,720	ML175	1.75	12.86	7.35	-	-	25.10
2	75,360	ML200	2.00	14.70	8.40	-	-	41.00
2-1/4	95,360	ML225	2.25	16.54	9.45	-	-	58.00
	117,720	ML250	2.50	18.38	10.50	-	-	74.90
2-3/4	142,440	ML275	2.75	20.21	11.55	-	-	99.80

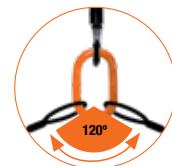
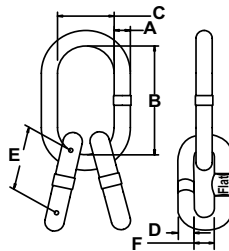
NOTE: Master link with flats are available through 1-1/4" only. Part numbers with "NF" are for master links WITHOUT flats.

# WIDE BODY SUB-ASSEMBLY WITH FLATS

WORKING LOAD LIMIT: 4,600 TO 142,400 LBS.

## BENEFITS & FEATURES

- Designed to accept Herc-Alloy 800® chain, wire rope and synthetic attachments
- Durable orange powder coated finish
- 100% proof tested
- May be used for mechanical and welded sling assemblies
- Extra wide body is ideal for wire rope applications
- Sizes up to 1-1/4" intermediate links available with flats to accommodate Omega links
- 6:1 design factor



Can be used with included angles up to 120°

Trade Size (in.)	Working Load Limit with Wire Rope & Synthetics (lbs.)	Master Link Nominal Dimensions (in.)			Intermediate Link Nominal Dimensions (in.)			Weight (lbs.)		
		Product Code	Material Diameter A	Inside Length B	Inside Width C	Product Code	Material Diameter D		Inside Length E	Inside Width F
1/2	4,600	ML050SA	0.56	4.84	2.69	ML040	0.44	4.13	2.29	1.8
5/8	7,200	ML063SA	0.63	5.29	2.98	ML050	0.56	4.84	2.69	3.63
3/4	11,200	ML075SA	0.75	6.61	3.72	ML063	0.63	5.29	2.98	5.58
7/8	13,840	ML087SA	0.88	7.35	4.14	ML063	0.63	5.29	2.98	6.66
1	21,200	ML100SA	1.00	7.53	4.30	ML075	0.75	6.61	3.72	10.2
1-1/4	29,920	ML125SA	1.25	9.26	5.29	ML100	1.00	7.53	4.30	20.0
1-1/2	42,400	ML150SA	1.50	11.03	6.30	ML100	1.00	7.53	4.30	26.6
1-3/4	57,720	ML175SA	1.75	12.86	7.35	ML125	1.25	9.26	5.29	44.3
2	75,360	ML200SA	2.00	14.70	8.40	ML150	1.50	11.03	6.30	73.4
2-1/4	95,360	ML225SA	2.25	16.54	9.45	ML175	1.75	12.86	7.35	108.2

NOTE: Master link with flats are available through 1-1/4" only

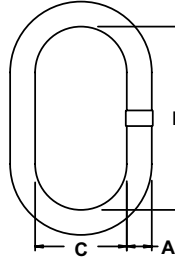


# MASTER LINK DUAL RATED FOR USE WITH HA800 OR HA1000

WORKING LOAD LIMIT: 5,400 TO 187,800 LBS.

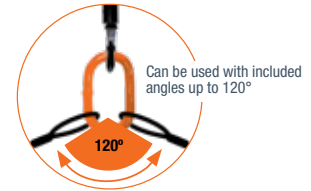
## BENEFITS & FEATURES

- Accepts both Herc-Alloy® 800 & 1000 chain and components
- Durable orange powder coated finish
- May be used for mechanical and welded sling assemblies
- 100% proof tested
- Design factor 4:1



Trade Size (in.)	Working Load Limit (lbs.)	Product Code	Nominal Dimensions (in.)			Weight (lbs.)	Type and Size of Grade 80 Chain Sling (in.)	
			Material Diameter A	Inside Length B	Inside Width C		Single	Double
<b>Standard Sizes (DUAL RATED THROUGH 1-3/4" SIZE ONLY)</b>								
3/8	5,400	555231	0.41	3.00	1.50	0.33	7/32 & 9/32	7/32
1/2	8,600	555232	0.56	5.00	2.50	1.02	3/8	9/32
3/4	17,600	555235	0.75	5.50	2.75	2.08	1/2	3/8
1	30,000	555238	1.00	7.00	3.50	4.59	5/8 & 3/4	1/2
1-1/4	45,200	555240	1.25	8.75	4.38	9.31	7/8	5/8
1-1/2	70,600	555243	1.50	10.50	5.25	15.60	1	3/4 & 7/8
1-3/4	105,900	555246	1.75	12.00	6.00	24.40	1-1/4	1
2*	88,900	554949	2.00	14.00	7.00	38.00	1-1/4	1
2-1/4*	125,200	554951	2.25	16.00	8.00	55.00	-	1-1/4
2-3/4*	187,800	554957	2.75	16.00	9.00	84.84	-	-
<b>Special Sizes (NOT DUAL RATED)</b>								
1	18,200	554969	1.00	8.00	4.00	5.25	N/A	N/A
1-1/4	22,800	554942	1.25	12.00	6.00	12.08		
1-1/2	36,700	554944	1.50	14.00	7.00	20.16		
1-1/2	42,900	554970	1.50	12.00	6.00	17.60		
1-3/4	57,100	554945	1.75	14.00	7.00	27.92		
2	77,800	554952	2.00	16.00	8.00	43.00		

NOTE: Standard sizes dual rated through 1-3/4" only. Special sizes not dual rated.





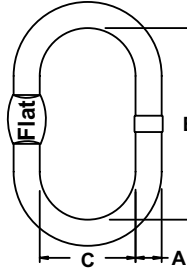
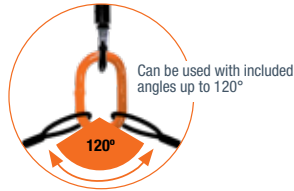
# MASTER LINK WITH & WITHOUT FLATS

## HERC-ALLOY 800®

**WORKING LOAD LIMIT: 3,360 TO 178,050 LBS.**

### BENEFITS & FEATURES

- Designed to accept HA800 chain, wire rope and synthetic attachments
- Use with mechanical and welded assemblies
- Sizes up to 1-1/4" available with flats to accommodate connecting links
- 100% proof tested
- Extra wide body makes these links ideal for wire rope applications and use with connecting links. Master link with flat allows for easy installation of these attachments
- Design factor 6:1



Trade Size (in.)	Working Load Limit (lbs.)		Product Code	Nominal Dimensions (in.)			Flat Dimensions (in.)		Weight (lbs.)	Type and Size of Chain Sling (in.)	
	With Chain	With Wire Rope & Synthetics		Material Diameter A	Inside Length B	Inside Width C	Width	Thickness		Single	Double
7/16	4,200	3,360	ML040 ML04NF	0.44	4.13	2.29	0.94 -	0.28 -	0.50	7/32 & 9/32	7/32
1/2	5,750	4,600	ML050 ML050NF	0.56	4.84	2.69	0.94 -	0.28 -	1.02	-	7/32
5/8	9,000	7,200	ML063 ML063NF	0.63	5.29	2.98	1.22 -	2.81 -	1.53	3/8	9/32
3/4	14,200	11,360	ML075 ML075NF	0.75	6.61	3.72	1.41 -	0.40 -	2.36	1/2	3/8
7/8	17,300	13,840	ML087 ML087NF	0.88	7.35	4.14	1.56 -	0.44 -	3.60	-	-
1	26,500	21,200	ML100 ML100NF	1.00	7.53	4.30	1.56 -	0.53 -	5.20	5/8	1/2
1-1/4	37,400	29,920	ML125 ML125NF	1.25	9.26	5.29	1.56 -	0.68 -	9.60	3/4 & 7/8	5/8
1-1/2	53,000	42,400	ML150	1.50	11.03	6.30	-	-	16.20	1	3/4
1-3/4	72,150	57,720	ML175	1.75	12.86	7.35	-	-	25.10	-	7/8
2	94,200	75,360	ML200	2.00	14.70	8.40	-	-	41.00	1-1/4	1
2-1/4	119,200	95,360	ML225	2.25	16.54	9.45	-	-	58.00	-	-

NOTE: \*Master link with flats are available through 1-1/4" only  
 Part numbers with "NF" are for master links WITHOUT flats

RIGGING HARDWARE

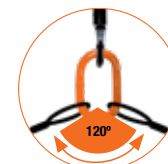
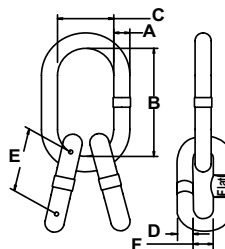
# WIDE BODY SUB-ASSEMBLY WITH FLATS HERC-ALLOY 800®

WORKING LOAD LIMIT: 4,600 TO 178,050 LBS.



## BENEFITS & FEATURES

- Designed to accept Herc-Alloy 800® chain, wire rope and synthetic attachments
- Durable orange powder coated finish
- 100% proof tested
- May be used for mechanical and welded sling assemblies
- Extra wide body is ideal for wire rope applications
- Sizes up to 1-1/4" intermediate links available with flats to accommodate Omega links
- Design factor 6:1



Can be used with included angles up to 120°

Trade Size (in.)	Working Load Limit (lbs.)		Master Link Nominal Dimensions (in.)							Weight (lbs.)	Type and Size of Chain Sling (in.)	
	With Chain	With Wire Rope & Synthetic	Product Code	Material Diameter A	Inside Length B	Inside Width C	Material Diameter D	Inside Length E	Inside Width F		Triple	Quad
1/2	5,750	4,600	ML050SA	0.56	4.84	2.69	0.44	4.13	2.29	1.8	–	–
5/8	9,000	7,200	ML063SA	0.63	5.29	2.98	0.56	4.84	2.69	3.63	7/32	7/32
3/4	14,000	11,200	ML075SA	0.75	6.61	3.72	0.63	5.29	2.98	5.58	9/32	9/32
7/8	17,300	13,840	ML087SA	0.88	7.35	4.14	0.63	5.29	2.98	6.66	–	–
1	26,500	21,200	ML100SA	1.00	7.53	4.30	0.75	6.61	3.72	10.2	3/8	3/8
1-1/4	37,400	29,920	ML125SA	1.25	9.26	5.29	1.00	7.53	4.30	20.0	1/2	1/2
1-1/2	53,000	42,400	ML150SA	1.50	11.03	6.30	1.00	7.53	4.30	26.6	–	–
1-3/4	72,150	57,720	ML175SA	1.75	12.86	7.35	1.25	9.26	5.29	44.3	5/8	5/8
2	94,200	75,360	ML200SA	2.00	14.70	8.40	1.50	11.03	6.30	73.4	3/4	3/4
2-1/4	119,200	95,360	ML225SA	2.25	16.54	9.45	1.75	12.86	7.35	108.2	7/8	7/8

NOTE: Master link with flats are available through 1-1/4" only